

LED Auxiliary Driving Lamps Overview

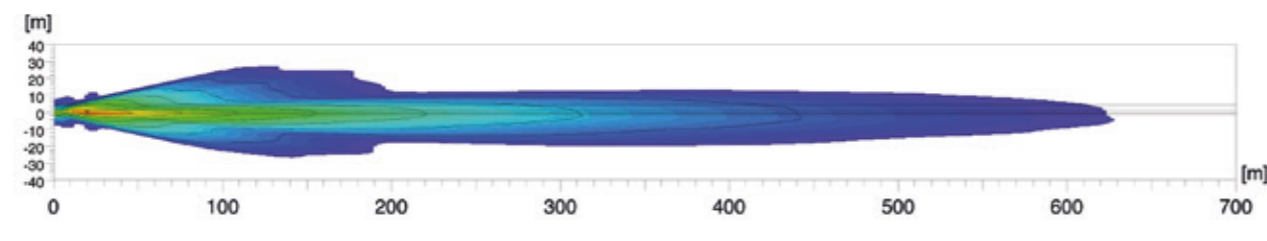


Luminator

Luminator LED Gen. II, ECE Ref. 50



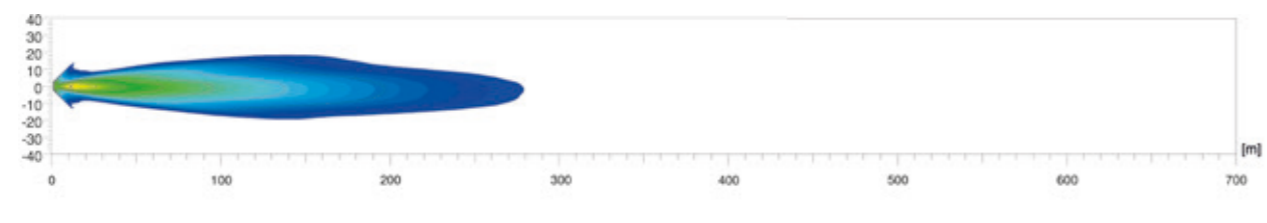
FS LED / LED-P0
12 / 24 V, 30 W
1F8 011 002-211



Luminator Celis, ECE / SAE Ref. 17.5



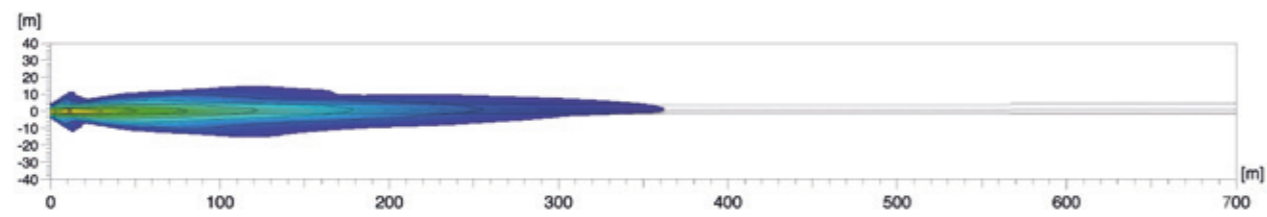
FS / LED-P0
12 / 24 V
Metal
1F8 007 560-201
Chromium
1F8 007 560-211



Luminator with LED position light, ECE Ref. 25



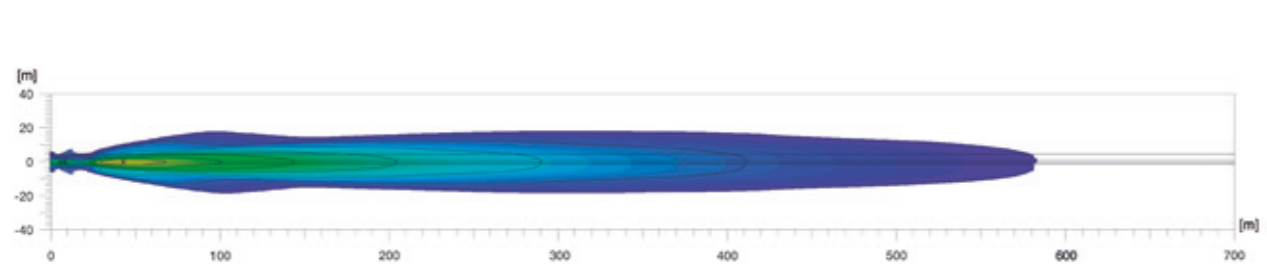
FS / LED-P0
12 / 24 V
1F8 007 560-451



Luminator Compact LED, ECE Ref. 45



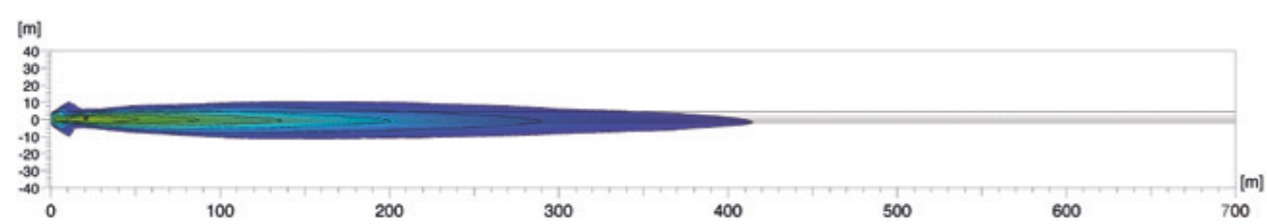
FS LED
12 / 24 V, 11 W
Chrome design ring
1F3 011 815-001
Black design ring
1F3 011 815-011
Black design ring,
heavy duty
1F3 011 815-031



Luminator Compact Celis, ECE Ref. 37.5



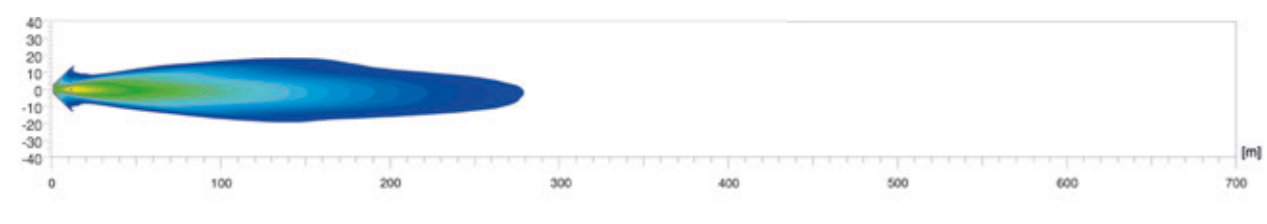
FS / LED-P0
12 / 24 V
Metal
1F1 009 094-041
Chromium
1F1 009 094-051



Luminator Chromium Compact Celis, ECE / SAE Ref. 17.5



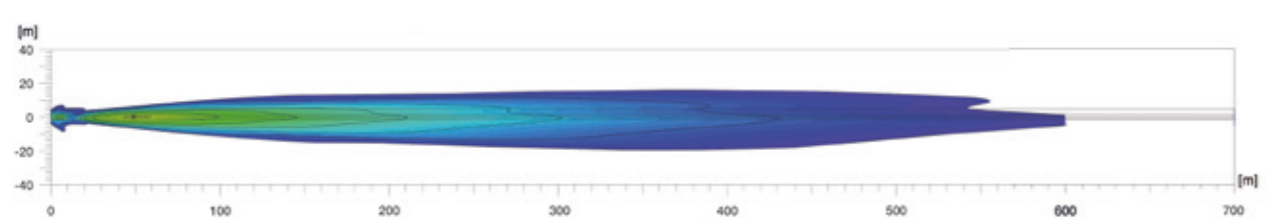
FS / LED-P0
12 / 24 V
1F1 009 094-091



Luminator X LED, ECE Ref. 37.5



FS LED
12 / 24 V, 40 W
Chrome design ring
1F0 012 206-001
Black design ring
1F0 012 206-011

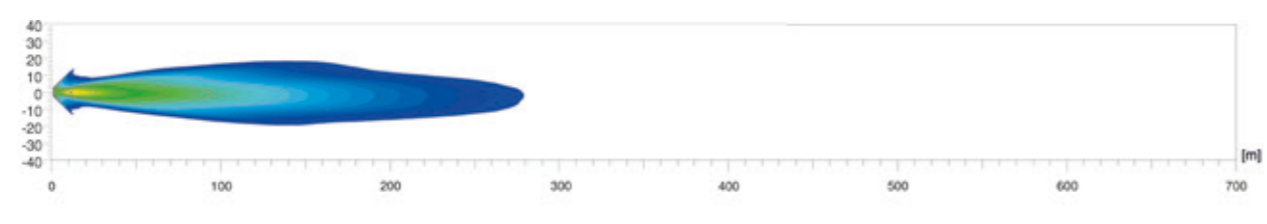


Rallye

Rallye 3003 Celis, ECE / SAE Ref. 17.5



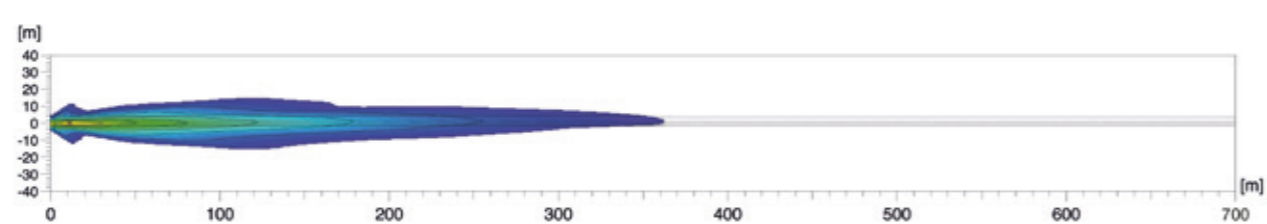
FS / LED-P0
12 / 24 V
1F8 009 797-451



Rallye 3003 with LED position light, ECE Ref. 25



FS / LED-P0
12 / 24 V
Silver-coloured ring
1F8 009 797-421
Chrome ring
1F8 009 797-431

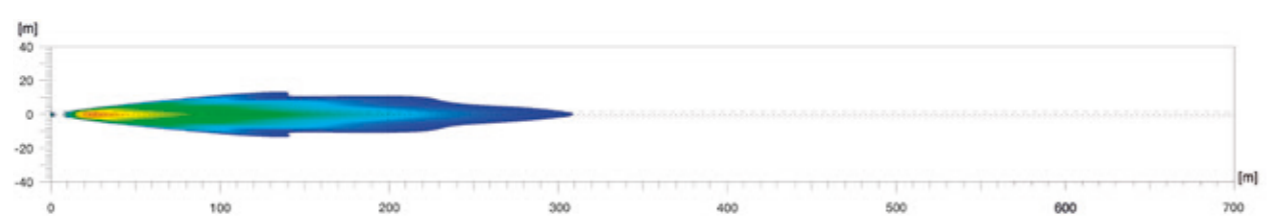


Comet 200 LED

COMET 200 LED, ECE / SAE / CCC Ref. 12.5



FS LED
12 V, 13 W
1F2 012 414-001

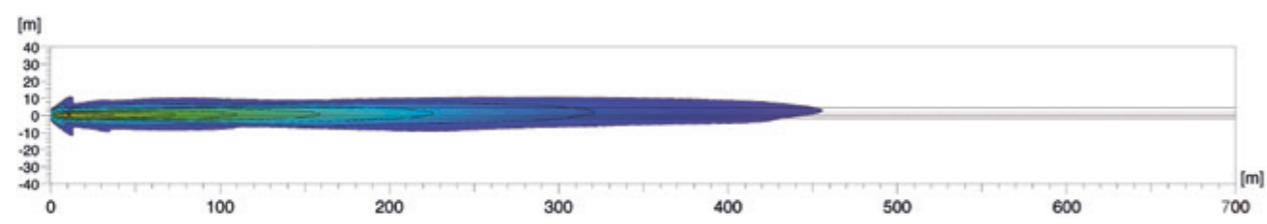


Jumbo

Jumbo 320 FF with LED position light, ECE Ref. 37.5



FS / LED-P0
12 / 24 V
1FE 008 773-081

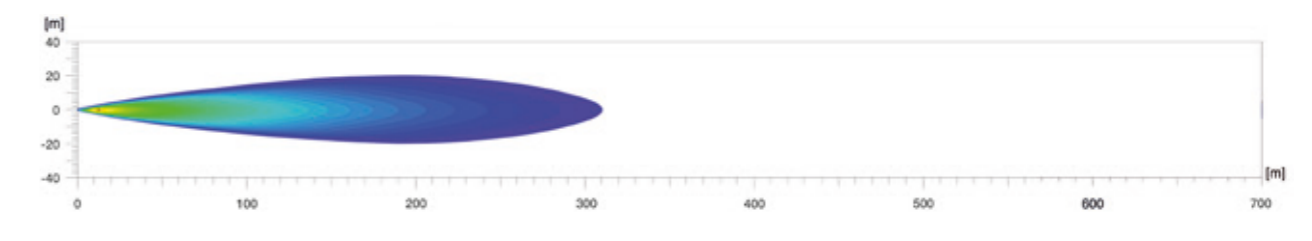


LED Light Bar

LED Light Bar 350, ECE Ref. 20



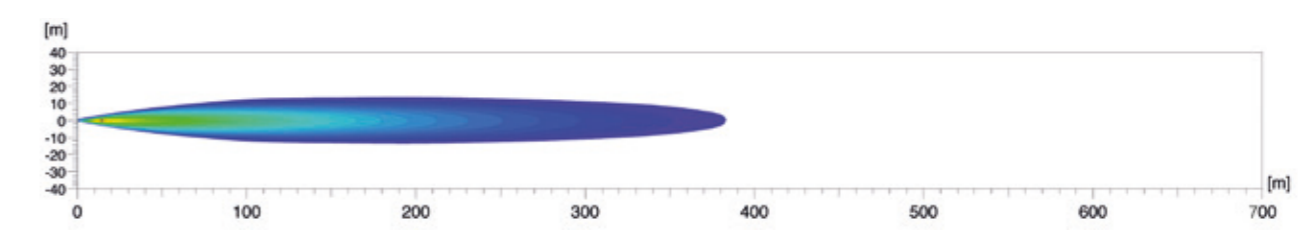
FS LED
12 / 24 V, 25 W
with universal
bracket
1FJ 958 040-072



LED Light Bar 350, ECE Ref. 30



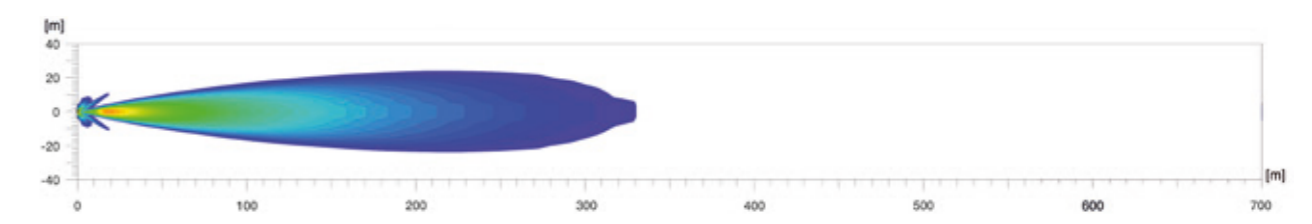
FS LED
12 / 24 V, 25 W
with universal
bracket
1FJ 958 040-082



LED Light Bar 470, ECE Ref. 25



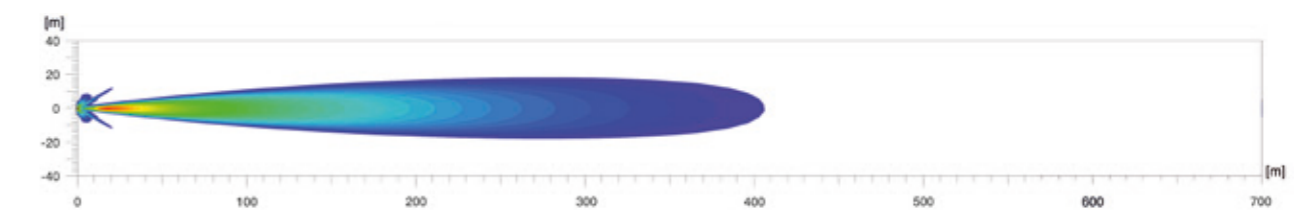
FS LED
12 / 24 V, 35 W
1FJ 958 130-111



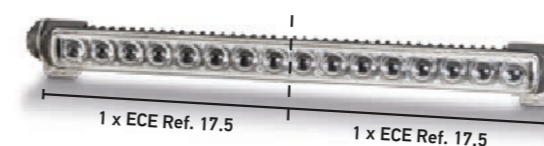
LED Light Bar 470, ECE Ref. 37.5



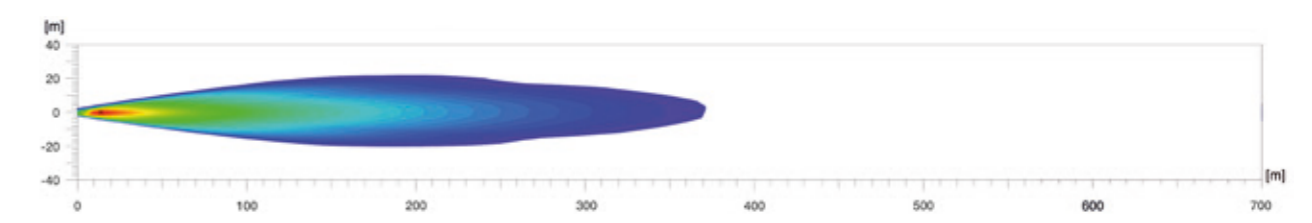
FS LED
12 / 24 V, 35 W
1FJ 958 130-011



LED Light Bar 470 Single Twin, ECE Ref. 17.5 + 17.5



FS LED
12 / 24 V, 2 x 18 W
1FJ 958 130-301

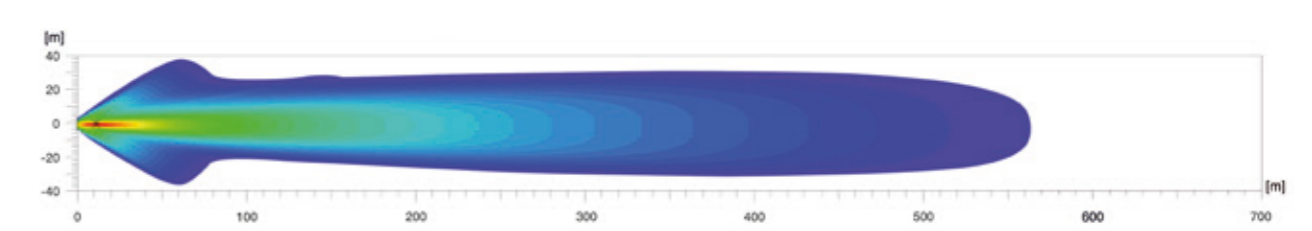


RokLUME

RokLUME 380 N, ECE Ref. 40



FS LED
12 V, 85 W
1FA 996 197-151
24 V, 85 W
1FA 996 197-181

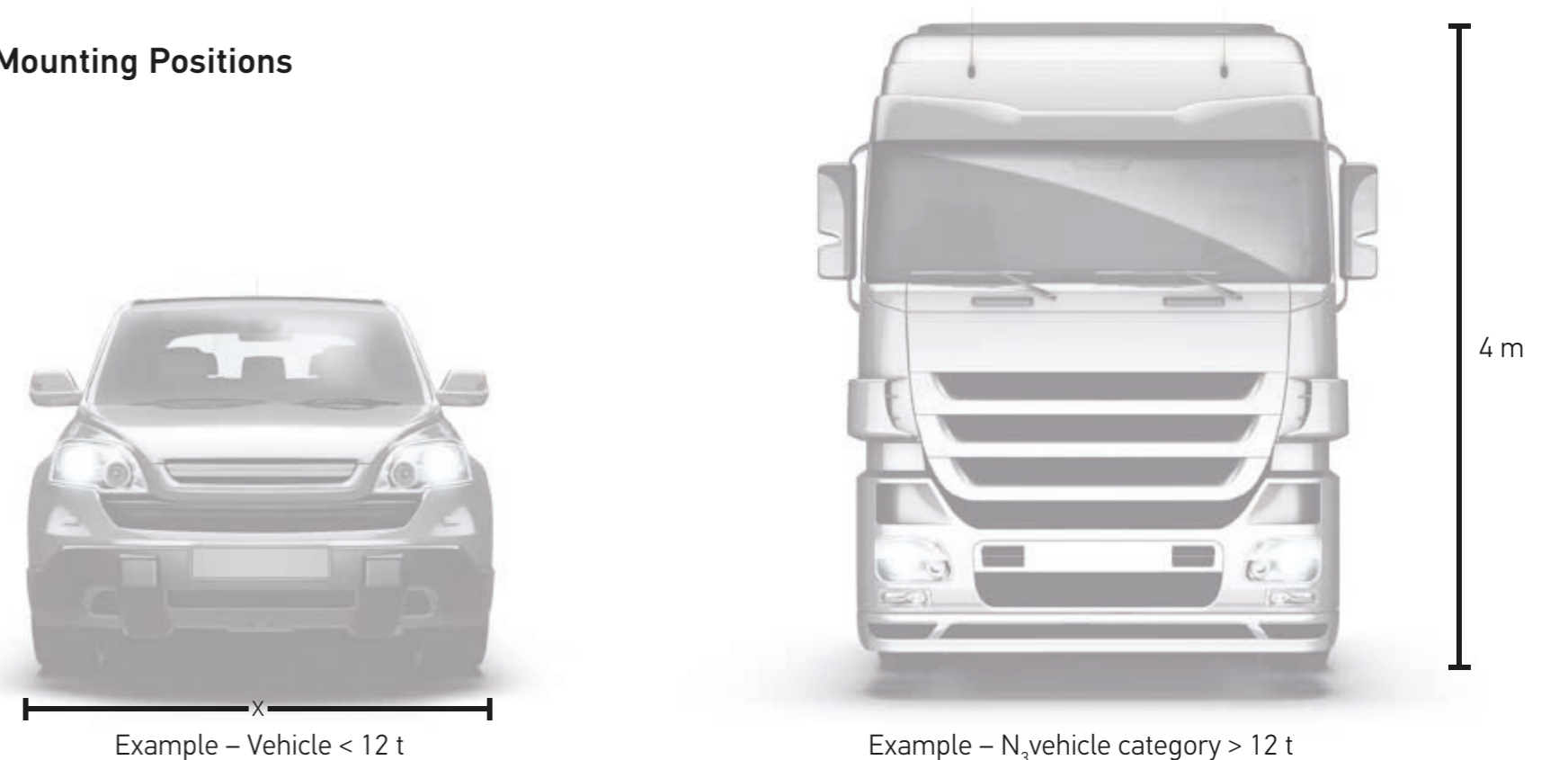


Legend

FS = High-beam headlamp | FS LED = High-beam headlamp LED | LED-P0 = LED position light



Permitted Mounting Positions



Headlamp for High Beam (integrated into the headlamp and auxiliary driving lamp)

Mounting	Required for all passenger car classes
Number	2 or 4 units, for N ₂ vehicles*, max. 6 units High beam to be switched on only if oncoming traffic is not dazzled.
Mounting Height	No specific regulations, i.e. can be freely selected up to a height of 4 m.
Mounting Width	No specific regulations but mounted in such a way that the driver is not dazzled by reflections.
Electrical Circuit	The high-beam headlamps may only be switched on either at the same time or in pairs. If two additional high-beam headlamps have been mounted, then no more than 2 pairs may be switched on at the same time. During the transition from low beam to high beam, at least 1 pair needs to be switched on for high beam. When the low beam is switched on, all high-beam headlamps have to be extinguished simultaneously.
Other Regulations	The sum of the reference numbers of all the high-beam headlamps that are operational on the vehicle may not be greater than 100.

* N₂ vehicles: for the transportation of goods with a permissible total weight of >12 t.

Please observe the statutory provisions of your country. The reference number of all switched-on high-beam headlamps (always only in pairs) combined may not exceed 100.

Twin auxiliary driving lamp

LED Light Bar 470 Single Twin



- For central mounting on a vehicle
- Innovative design and maximum flexibility
- With 2 x 8 bright high-performance LEDs

